

# RG-EG310GH-P-E

## Reyee10-Port High-Performance Cloud Managed PoE Office Router



### Highlights

- 1.5 Gbps throughput, high-performance VPN router for office networks.
- Powerful VPN for branches and remote employees.
- Traffic visualization and monitoring.
- Efficient bandwidth management based on applications and users.
- Multi-WAN, intelligent load balancing.

## Highlight Features

### High-performance VPN Router for Office Network

RG-EG100 Series

600 Mbps

↑ 256%

RG-EG300 Series

1.5 Gbps



300  
Concurrent Clients



Max. 4  
WAN Ports



64  
VPN Tunnels

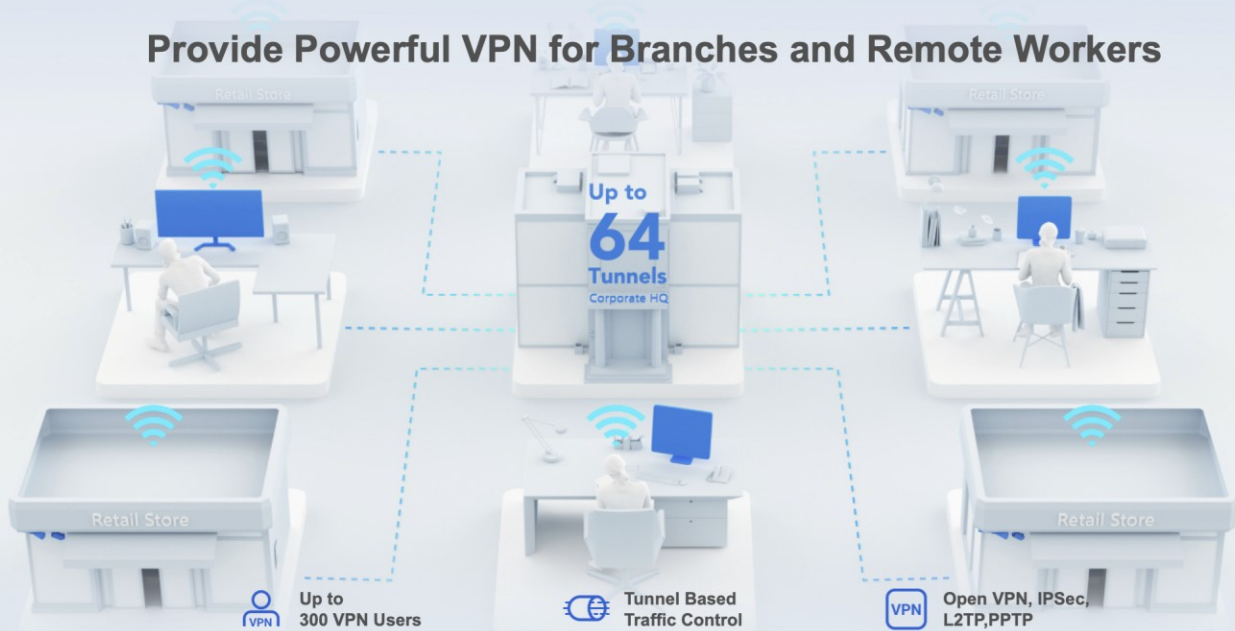


Load  
Balancing



Free Cloud  
Management

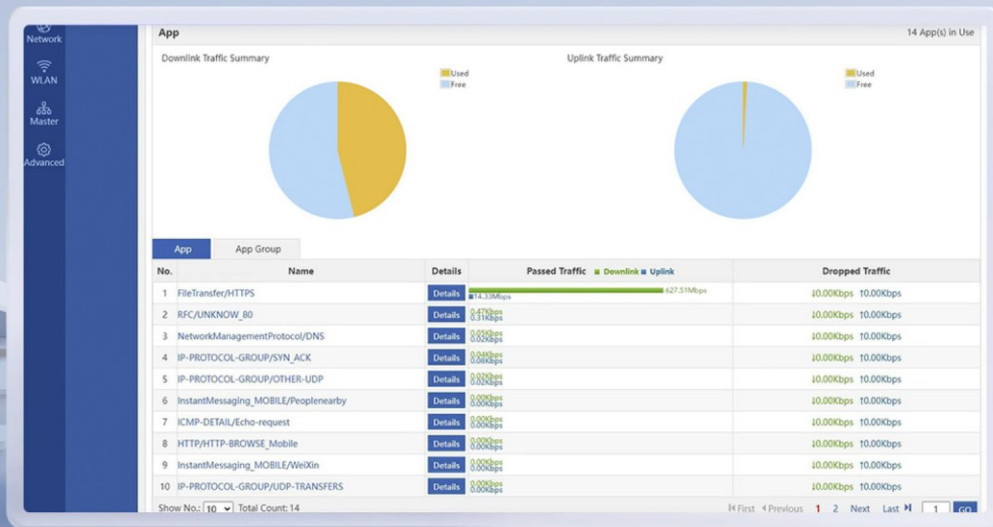
### Provide Powerful VPN for Branches and Remote Workers



## Highlight Features

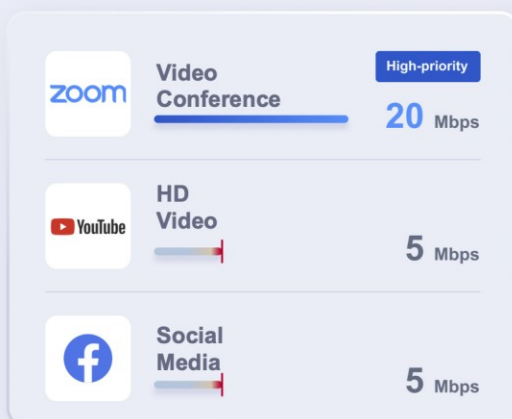
### Who is Eating Your Internet Speed?

Traffic visualization monitoring for you. No matter traffic user ranking, or traffic application ranking, everything in a glance

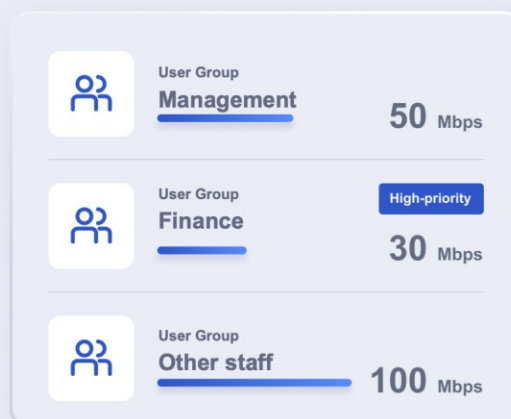


### New Efficient Way of Bandwidth Management

#### Application Based Bandwidth Management



#### User Based Bandwidth Management

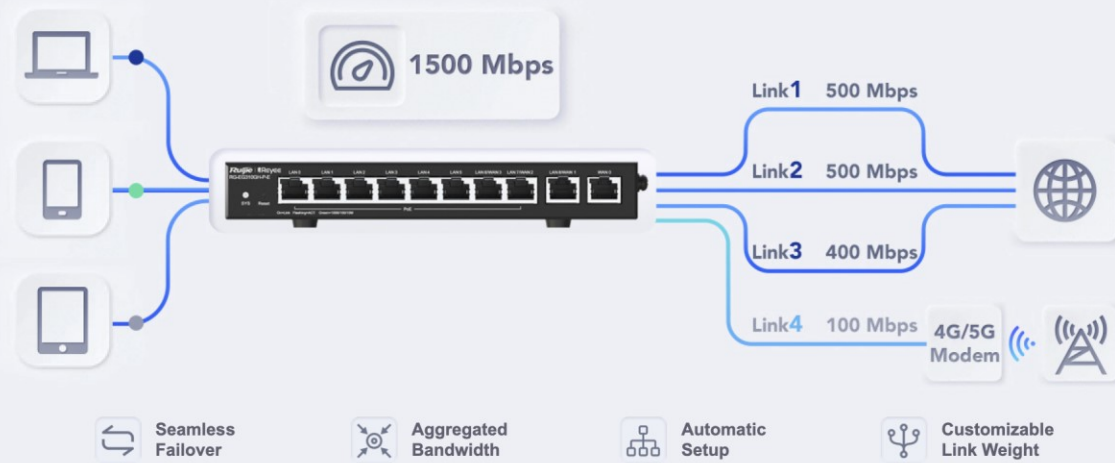




## Highlight Features

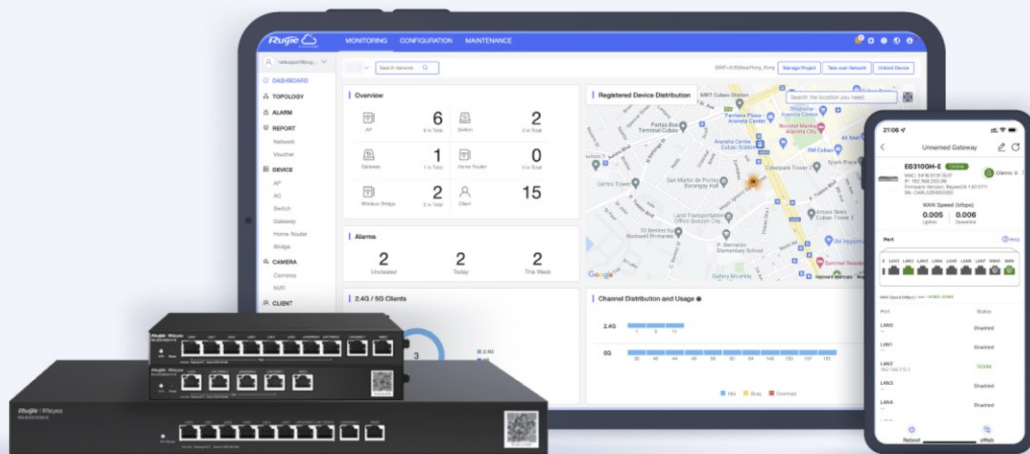
### Unbreakable Multi-WAN, Intelligent Load Balancing

Supports load balancing, redundancy link, and source IP based PBR(Policy based routing).  
Preventing login failures due to IP address changes for services such as e-banking.



### Cloud, Make Your Business Easy

- Reyee free DDNS
- Cloud portal authentication
- Remote monitoring and maintenance
- Upgrade firmware via Cloud
- APP library dynamic update
- Customized APP library via APP



## / Hardware Specifications

| Model                             | RG-EG310GH-P-E  |
|-----------------------------------|---|
| Port Specifications               |   |
| Total number of RJ45 ports        | 10  |
| Number of 10/100/1000BASE-T ports | 10  |
| Maximum number of LAN ports       | 9   |
| Maximum number of WAN ports       | 4   |
| Number of fixed LAN ports         | 6   |
| Number of fixed WAN ports         | 1   |
| Number of LAN/WAN ports           | 3   |
| LEDs                              | 1 x system status LED<br>10 x Ethernet port LEDs  |
| Reset button                      | 1   |
| System Specifications             |   |
| CPU                               | Dual-core processor, 1.35 GHz clock frequency per core  |
| Flash memory                      | 256 MB  |
| RAM                               | 512 MB  |
| Power Supply and Consumption      |   |
| Power supply                      | DC power adapter  |
| Dimensions of the DC connector    | Outer diameter: 5.5 mm (0.22 in.)<br>Inner diameter: 2.1 mm (0.08 in.)<br>Depth: 10.0 mm (0.39 in.) |
| Maximum power consumption         | 130 W   |
| PoE budget                        | 110 W   |
| Number of PoE Out ports           | 8   |
| PoE budget per port               | 30 W  |
| PoE power pins                    | 1-2 (+), 3-6 (-)  |
| PoE Out standard                  | IEEE 802.3af/at (PoE/PoE+)  |

# / Hardware Specifications

| Model                          | RG-EG310GH-P-E  |
|--------------------------------|---|
| Dimensions and Weight          |   |
| Package dimensions (W x D x H) | 594 mm x 430 mm x 267 mm (23.39 in. x 16.93 in. x 10.51 in.)  |
| Product dimensions (W x D x H) | 202 mm x 108 mm x 28 mm (7.95 in. x 4.25 in. x 1.1 in.)   |
| Shipping weight                | 1.62 kg (3.57 lbs)  |
| Weight                         | 1.50 kg (3.31 lbs)  |
| Environment and Reliability    |   |
| Cooling                        | Natural cooling   |
| Fan                            | Fanless design  |
| Mounting options               | Desk  |
| Operating humidity             | 10% RH to 90% RH (non-condensing)   |
| Operating temperature          | 0°C to 40°C (32°F to 104°F)   |
| Storage humidity               | 5% RH to 95% RH (non-condensing)  |
| Storage temperature            | −40°C to +70°C (−40°F to +158°F)  |
| Surge protection               | Service port: ±4 kV for common mode<br>Power connector: ±4 kV for common mode and ±4 kV for differential mode |

# Software Specifications

| Model   | RG-EG310GH-P-E   |
|---|--|
| System Performance Capacity   |  |
| Maximum number of concurrent sessions   | 100000   |
| Recommended number of concurrent clients                                      | 350  |
| Throughput  | 1500 Mbps  |
| Basic Configurations  |  |
| AC mode   | Yes  |
| Automatically identifying the Internet access mode and obtaining IP addresses | Yes  |
| Automatically learning the PPPoE username and password of other routers       | Yes  |
| Configuration backup  | Yes  |
| Internet access mode  | Static IP address<br>Static IPv6 address<br>Dynamic IP address<br>Dynamic IPv6 address<br>PPPoE  |
| Local upgrade   | Yes  |
| Log upload  | Yes  |
| Online upgrade  | Yes  |
| Restoring factory defaults  | Yes  |
| System language   | Turkish, Arabic, Vietnamese, Thai, Indonesian, Latin American Spanish, Brazilian Portuguese, Russian, French, German, European Spanish, Italian, and Polish. |
| Authentication  |  |
| Portal authentication   | Yes  |
| One-click authentication  | Yes  |
| Password authentication   | Yes  |

## Software Specifications

| Model  | RG-EG310GH-P-E |
|--|----------------|
| SMS-based authentication   | Yes            |
| Voucher authentication supported by Ruijie Cloud portal page       | Yes            |
| Cloud portal authentication  | Yes            |
| Local portal authentication  | Yes            |
| QR code authentication   | Yes            |
| Custom portal page   | Yes            |
| Account-based authentication supported by Ruijie Cloud portal page | Yes            |
| CHAP, MS-CHAPv1, MS-CHAPv2   | Yes            |
| Delivery through Ruijie Cloud portal page                          | Yes            |
| 802.1X authentication  | Yes            |
| MAC address-based authentication                                   | Yes            |
| PPPoE server   | Yes            |
| Number of accounts supported by the PPPoE server                   | 300            |
| Number of concurrent clients supported by the PPPoE server         | 128            |
| PAP  | Yes            |
| RADIUS authentication  | Yes            |
| RADIUS client  | Yes            |
| RADIUS accounting based on time or traffic                         | Yes            |
| RADIUS flow control authorization                                  | Yes            |
| RADIUS proxy server  | Yes            |
| RADIUS traffic quota authorization                                 | Yes            |



## Software Specifications

| Model  | RG-EG310GH-P-E |
|--|----------------|
| RADIUS user group authorization                        | Yes            |
| Third-party authentication                             | Yes            |
| Ethernet Interface                                     |                |
| Avoiding IP address conflicts on WAN interfaces        | Yes            |
| Load balancing   | Yes            |
| MAC address cloning                                    | Yes            |
| Multiple WAN interfaces on the same network segment    | Yes            |
| PPPoE clients  | Yes            |
| Scheduled PPPoE reconnection                           | No             |
| Ethernet Switching                                     |                |
| Configuring multiple VLANs upon configuration delivery | No             |
| Link aggregation                                       | No             |
| LLDP   | No             |
| VLAN   | Yes            |
| VLAN configuration supported on LAN ports              | Yes            |
| Super-VLAN   | No             |
| Configuring the same VLAN tag for multiple WAN ports   | No             |
| VLAN priority  | Yes            |
| Gateway Features                                       |                |
| WAN failover   | Yes            |
| Application priority                                   | Yes            |
| Application recognition                                | Yes            |

## Software Specifications

| Model                                       | RG-EG310GH-P-E |
|---|----------------|
| Behavior management                         | Yes            |
| Flow control                                | Yes            |
| Time-based blocking policy                  | Yes            |
| IP address-based blocking policy            |                |
| Website filtering: custom URL               | Yes            |
| Traffic audit                               | Yes            |
| URL audit log                               | Yes            |
| Audit log server                            | Yes            |
| Audit log storage                           | No             |
| Uploading audit logs to a server            | Yes            |
| IP Routing                                  |                |
| Application-based routing                   | Yes            |
| Bandwidth aggregation                       | Yes            |
| BGP   | Yes            |
| BGP4  | Yes            |
| BGP4+                                       | Yes            |
| ECMP  | No             |
| IPv4 static route                           | Yes            |
| IPv6 PBR                                    | Yes            |
| IPv6 static route                           | Yes            |
| IS-ISv4                                     | No             |
| IS-ISv6                                     | No             |
| Load balancing based on flows               | Yes            |
| Load balancing based on source IP addresses | Yes            |

## Software Specifications

| Model  | RG-EG310GH-P-E |
|--|----------------|
| Load balancing based on the interface weight | Yes            |
| Route selection by link quality              | Yes            |
| OSPFv2                                       | Yes            |
| OSPFv3                                       | Yes            |
| RIP  | Yes            |
| RIPng  | Yes            |
| IP Service                                   |                |
| 3322.org                                     | Yes            |
| ALG  | Yes            |
| ARP binding                                  | Yes            |
| Maximum number of ARP entries                | 1024           |
| Proxy ARP                                    | No             |
| Cloudflare                                   | Yes            |
| DHCP client                                  | Yes            |
| DHCP server                                  | Yes            |
| DHCP relay                                   | No             |
| Option 43                                    | Yes            |
| Option 138                                   | Yes            |
| Static/Dynamic NAT                           | Yes            |
| NAT-PT                                       | No             |
| NAT loopback                                 | Yes            |
| DNS client                                   | Yes            |
| DNS proxy                                    | Yes            |

## Software Specifications

| Model  | RG-EG310GH-P-E |
|--|----------------|
| DNS server   | Yes            |
| No-IP DNS  | Yes            |
| GRE tunnel   | No             |
| IPTV   | Yes            |
| IPv4 ping  | Yes            |
| IPv6   | Yes            |
| IPv6 ping  | Yes            |
| Number of port mapping entries                             | 512            |
| Port mapping   | Yes            |
| DDNS   | Yes            |
| Ruijie DDNS  | Yes            |
| Alibaba Cloud DDNS   | Yes            |
| UPnP   | Yes            |
| Network Management and Monitoring                          |                |
| Web management   | Yes            |
| Ruijie Cloud management                                    | Yes            |
| Management on Ruijie Reyee App                             | Yes            |
| Remotely monitoring devices through Ruijie Reyee App       | Yes            |
| Restarting devices through Ruijie Reyee App                | Yes            |
| Upgrading device software version through Ruijie Reyee App | Yes            |
| Fault diagnosis  | Yes            |
| FTP client (IPv4 address)                                  | No             |
| FTP server (IPv4 address)                                  | No             |

## Software Specifications

| Model   | RG-EG310GH-P-E  |
|---|---|
| TFTP client (IPv4 address)                      | Yes   |
| TFTP server (IPv4 address)                      | No  |
| HTTPS login                                     | Yes   |
| NTP client                                      | Yes   |
| NTP server                                      | No  |
| Scheduled device restart                        | Yes   |
| SNMPv1, v2c, and v3                             | Yes   |
| SON   | Yes   |
| SSH   | No  |
| Telnet  | No  |
| Web login information                           | Default IP Address: 192.168.110.1<br>Default Password: admin  |
| Maximum number of managed devices (router mode) | AP and NBS series: 150<br>ES series: 128<br>Note: The maximum number of managed devices varies with each device series. |
| Maximum number of managed devices (AC mode)     | AP and NBS series: 500<br>ES series: 128<br>Note: The maximum number of managed devices varies with each device series. |
| Reliability                                     |   |
| Stacking  | No  |
| VRRP  | No  |
| SD-WAN  |   |
| SD-WAN  | Yes   |
| SD-WAN performance                              | 300 Mbps  |
| Number of tunnels supported by SD-WAN           | 192   |
| Maximum number of SD-WAN branches               | 64  |

## Software Specifications

| Model  | RG-EG310GH-P-E |
|--|----------------|
| Active/Standby mode (automatically switching to the standby interface when the active interface fails) | Yes            |
| Bypass networking for a device in AP mode  | No             |
| Centralized traffic forwarding policy  | Yes            |
| Multi-WAN link bundling efficiency (lab data)  | ≥ 80%          |
| Security   |                |
| ACL  | Yes            |
| DHCP snooping  | No             |
| Malformed packet attack defense  | Yes            |
| Fragmentation attack defense   | No             |
| Teardrop attack defense  | Yes            |
| LAND attack defense  | Yes            |
| SYN flood attack defense   | Yes            |
| Smurf attack defense   | Yes            |
| IP attack defense  | Yes            |
| Disabling ping   | Yes            |
| Stateful firewall  | Yes            |
| IP-MAC binding   | Yes            |
| Network sharing prevention   | Yes            |
| Security log   | Yes            |
| Security zone  | Yes            |
| User group-based connection limiting   | Yes            |
| VPN  |                |



## Software Specifications

| Model  | RG-EG310GH-P-E |
|--|----------------|
| IPsec VPN  | Yes            |
| IPsec VPN bandwidth  | 170 Mbps       |
| Maximum number of branches in IPsec VPN networking             | 64             |
| L2TP VPN   | Yes            |
| L2TP VPN bandwidth   | 540 Mbps       |
| Maximum number of branches in L2TP VPN networking              | 64             |
| OpenVPN  | Yes            |
| OpenVPN bandwidth  | 100 Mbps       |
| Maximum number of branches in OpenVPN networking               | 64             |
| PPTP VPN   | Yes            |
| PPTP VPN bandwidth   | 640 Mbps       |
| Maximum number of branches in PPTP VPN networking              | 64             |
| SSL VPN  | No             |
| Easy VPN 1.0   | No             |
| Number of VPN accounts for L2TP, PPTP, and OpenVPN             | 300            |
| WireGuard server   | Yes            |
| WireGuard client   | Yes            |
| WireGuard performance  | 300 Mbps       |
| Number of concurrent tunnels supported by the WireGuard server | 64             |
| WLAN   |                |
| Maximum number of APs (AC mode)                                | 500            |
| Maximum number of devices that can be managed                  | 128            |

# Software Specifications

| Model                                   | RG-EG310GH-P-E |
|---|----------------|
| Wireless Intelligent Optimization (WIO) | Yes            |

# Package Contents

| Model         | RG-EG310GH-P-E                         |
|---------------|--|
| Accessories   |  |
| Power adapter | 1                                      |
| Power cord    | 1 x 1 m ± 50 mm (39.37 in. ± 1.97 in.) |
| Rubber pad    | 4                                      |
| Manual        |  |
| User Manual   | 1                                      |
| Warranty Card | 1                                      |

*Ruijie* | ReYee

 Redefine your easy network



**Ruijie Networks Co., Ltd.**

Official Website: <https://Reyee.Ruijie.com>